

	a_1	b_1	c_1	r_1
A	600	1050	75	75
B	800	1400	100	100
C	1200	2100	150	150
D	1600	2800	200	200

Colour Legend

- Retroreflective white
- Retroreflective red
- Black
- Class 1W retroreflective fluorescent red/orange (target board edge strip)

Notes

1. This sign may be installed in advance of a railway crossing where the speed limit is reduced.
2. Refer pages 3, 4 and 5 for layout details.
3. * Insert appropriate speed.



Queensland
Government

RAILWAY CROSSING REDUCED SPEED LIMIT

Road Safety and Systems Management Division
Road Safety Unit

ORIGINAL APPROVED AS OFFICIAL TRAFFIC SIGN

[Signature]
PRINCIPAL ENGINEER
(Traffic Engineering)

30/09/10
Date

TC1747_1

Page 1/5

Designed
RH 1/09

Checked
JD 3/09

Scale
Not to Scale

A B C D E



	a	b	c	d	e	f	g	r
A	450	300	6	18	60	65DN	50	45
B	600	400	8	24	80	85DN	70	60
C	900	600	10	30	120	130DN	100	75
D	1200	800	16	48	160	170DN	140	100

Colour Legend

- Retroreflective white
- Black

Note

1. Sign to be installed under sign R4-1 on a target board (refer page 1).



Queensland
Government

SUPPLEMENTARY PLATE

"RAILWAY CROSSING"

Road Safety and Systems Management Division
Road Safety Unit

ORIGINAL APPROVED AS OFFICIAL TRAFFIC SIGN


PRINCIPAL ENGINEER
(Traffic Engineering)

30/09/10
Date

TC1747_2

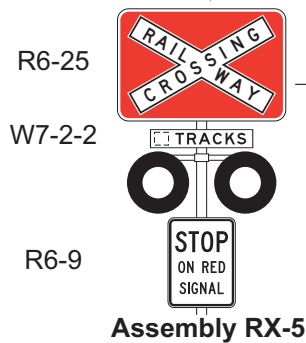
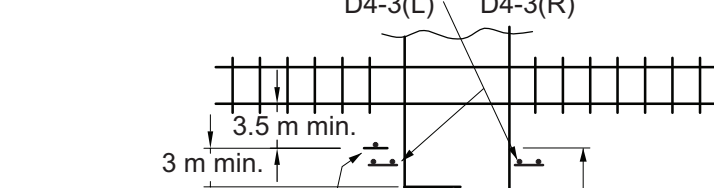
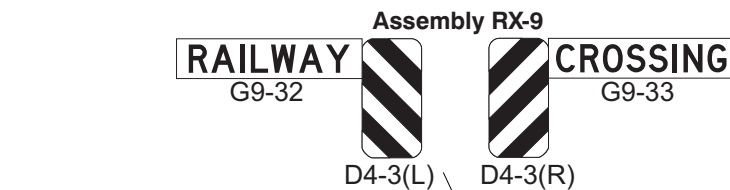
Page 2/5

Designed
RH 1/09

Checked
JD 3/09

Scale
Not to Scale

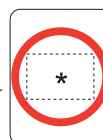
A B C D E



TC1747_1 (B)



120-180 m (Refer to Table 1 for distance requirements if TC1756 sign is used.)



R4-1



120-180 m

TC1747_1 (B)



Notes

1. For 110km/h speed zones Speed Limit Ahead (G9-79) signs shall be installed 300-500m ahead of the speed limit sign (TC1747_1).
2. * The R4-1 sign shall reinstate the speed limit.
3. G9-79 and TC1747_1 signs shall be B size only.

Vehicle speed km/h	Grade								meters
	-8%	-6%	-4%	-2%	level	2%	4%	6%	
<65	165	137	117	102	91	82	63	69	64
65-75	217	178	151	131	116	104	94	86	80
76-85	275	224	189	163	143	127	115	104	96
86-95	340	275	231	198	173	153	136	124	113
96-105	416	336	281	241	210	186	166	150	136
>105	508	412	345	296	259	129	206	186	169

Table1

Assembly RX-11



TC1756

Note:
Refer to TC1756 for details of the advance railway active sign RX-11 which may be used in lieu of the W7-4 static warning signs.



Queensland
Government

REDUCED SPEED LIMIT
LAYOUT - 80 KM/H ONLY
RAILWAY CROSSING CONTROLLED
BY FLASHING LIGHTS (ACTIVE CONTROL)
WITH OR WITHOUT BOOM GATES

Road Safety and Systems Management Division
Road Safety Unit

ORIGINAL APPROVED AS OFFICIAL TRAFFIC SIGN

Designed
RH 1/09

Checked
JD 3/09

Scale
Not to Scale

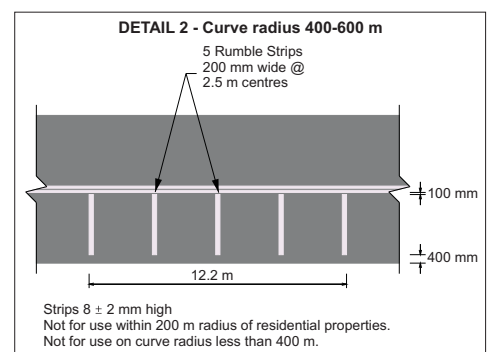
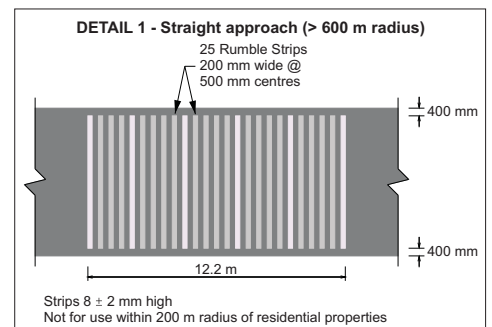
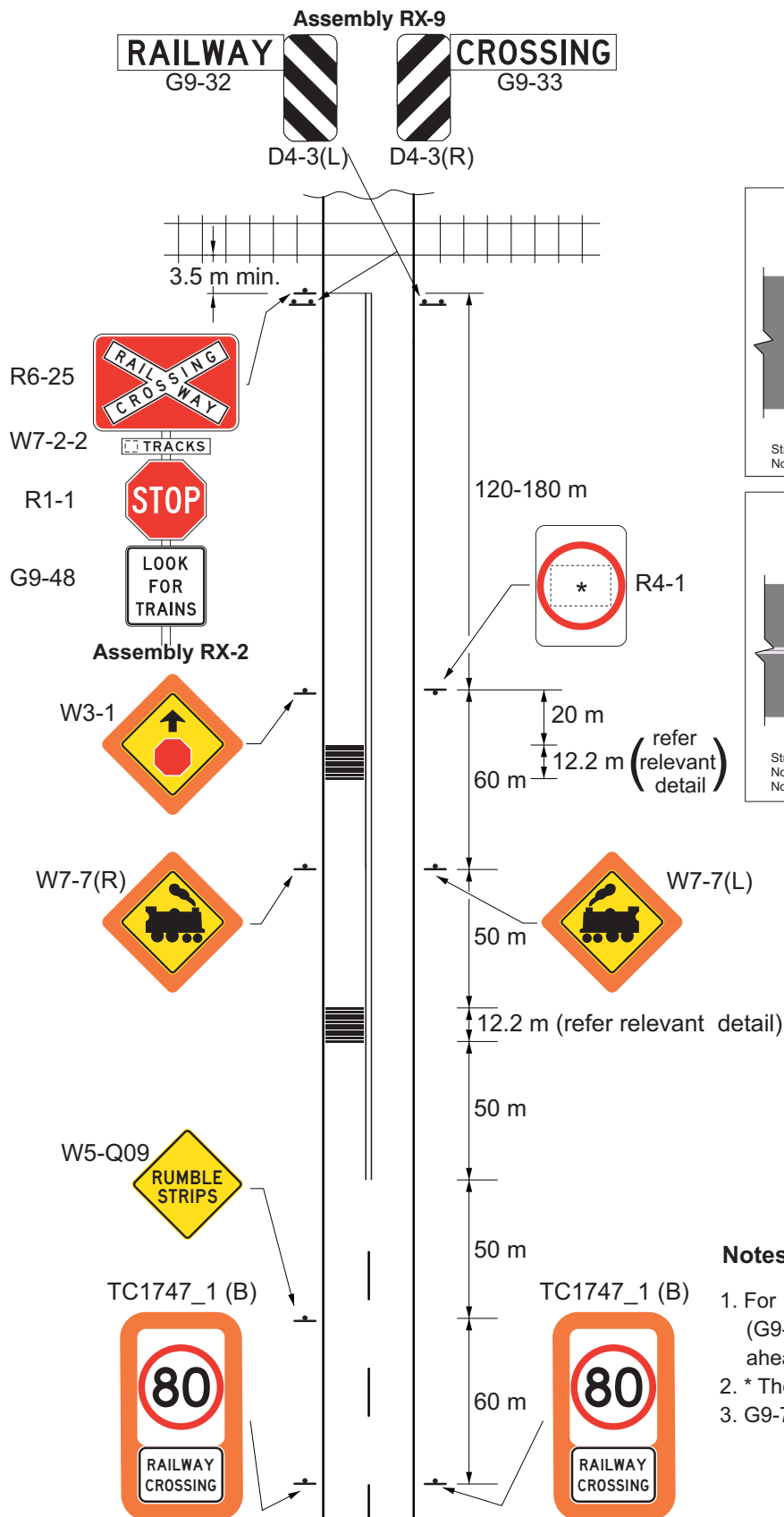

PRINCIPAL ENGINEER
(Traffic Engineering)

30/09/10
Date

TC1747_3

Page 3/5

A B C D E



Notes

1. For 110km/h speed zones Speed Limit Ahead (G9-79) signs shall be installed 300-500m ahead of the speed limit sign (TC1747_1).
2. * The R4-1 sign shall reinstate the speed limit.
3. G9-79 and TC1747_1 signs shall be B size only.



Queensland
Government

RUMBLE STRIPS AND REDUCED SPEED LIMIT LAYOUT - 80 KM/H ONLY RAILWAY CROSSING CONTROLLED BY STOP SIGNS (PASSIVE CONTROL)

Road Safety and Systems Management Division
Road Safety Unit

ORIGINAL APPROVED AS OFFICIAL TRAFFIC SIGN

Designed
RH 1/09

Checked
JD 3/09

Scale
Not to Scale

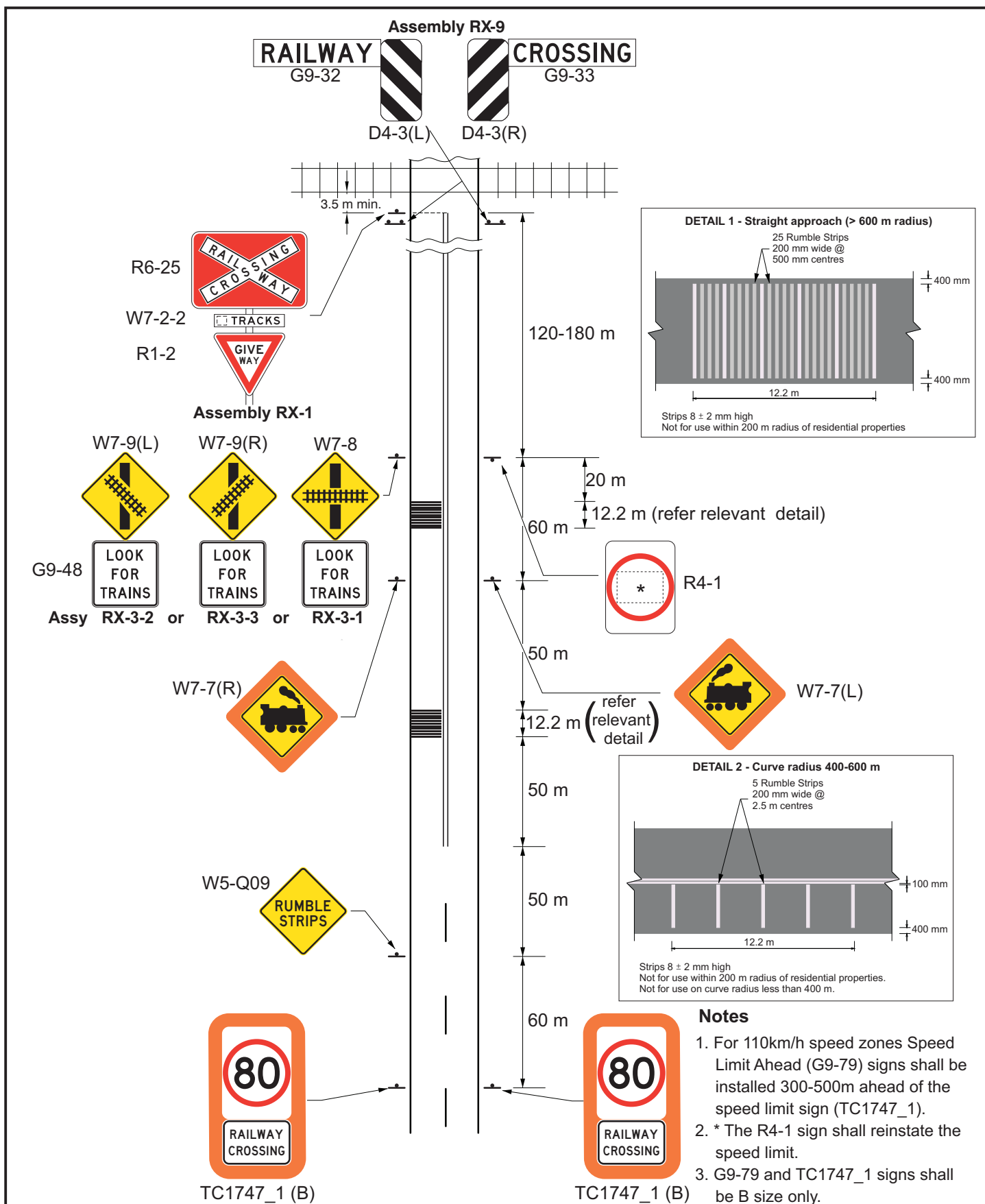

PRINCIPAL ENGINEER
(Traffic Engineering)

30/09/10
Date

TC1747_4

Page 4/5

A B C D E



**Queensland
Government**

**RUMBLE STRIPS AND REDUCED SPEED LIMIT
LAYOUT - 80 KM/H ONLY
RAILWAY CROSSING CONTROLLED BY
GIVE WAY SIGNS (PASSIVE CONTROL)**

Road Safety and Systems Management Division
Road Safety Unit

ORIGINAL APPROVED AS OFFICIAL TRAFFIC SIGN

Designed
RH 1/09

Checked
JD 3/09

Scale
Not to Scale

[Signature]
PRINCIPAL ENGINEER
(Traffic Engineering)

30/09/10
Date

TC1747_5

Page 5/5

A B C D E